

Creating a Streamed Citrix Application in RES PowerFuse 2009

Although there is an article regarding this by both Citrix and RES they both appear to be incorrect.

For those of you familiar with PowerFuse 2009, the following screenshot (Fig.1) should suffice:

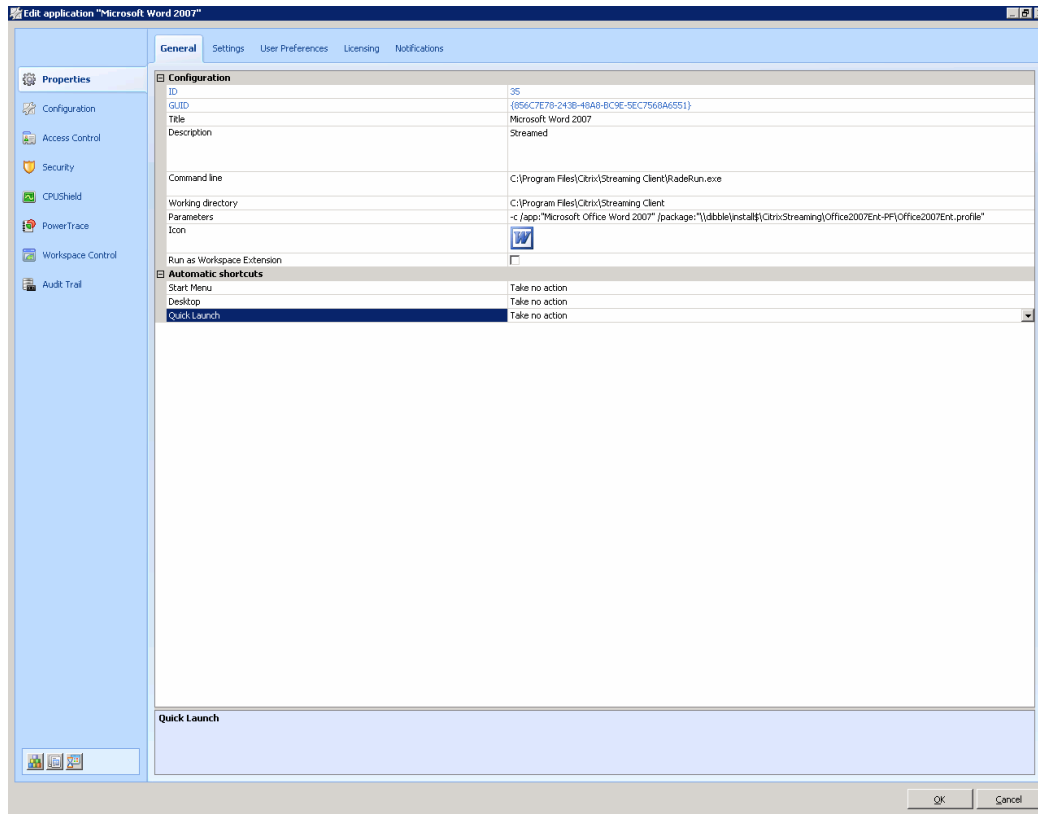


Fig. 1

For everyone else, here is a quick guide:

- Within Application Management, right click in the desired part of the tree and select *Add Application* (Fig. 2).
- Run through the wizard (Screenshots and annotations below).

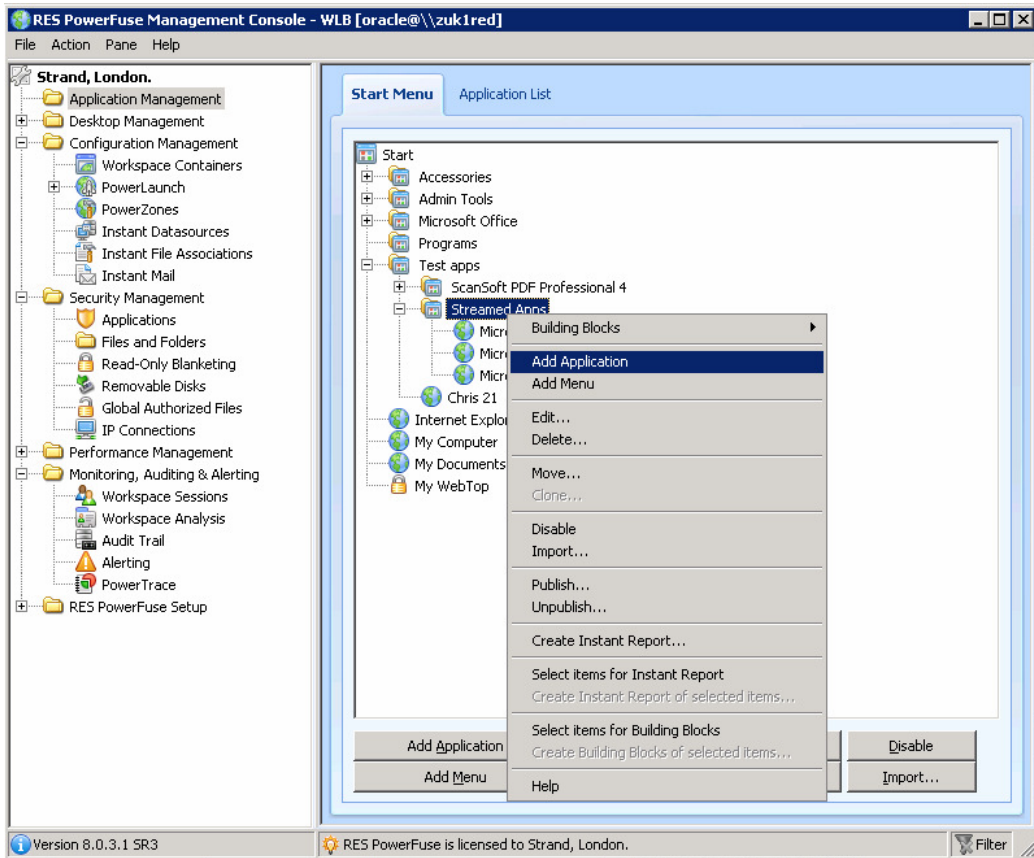
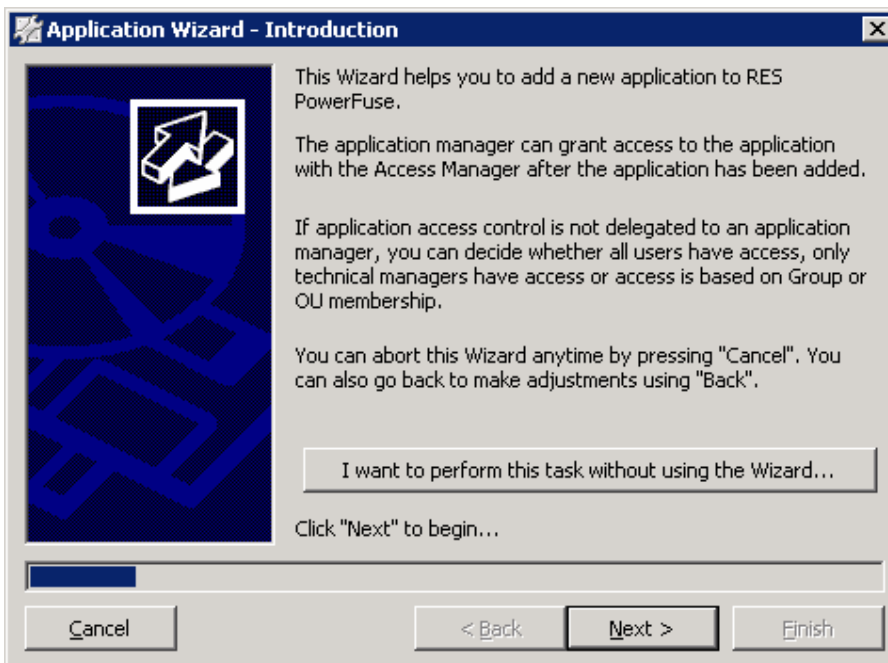
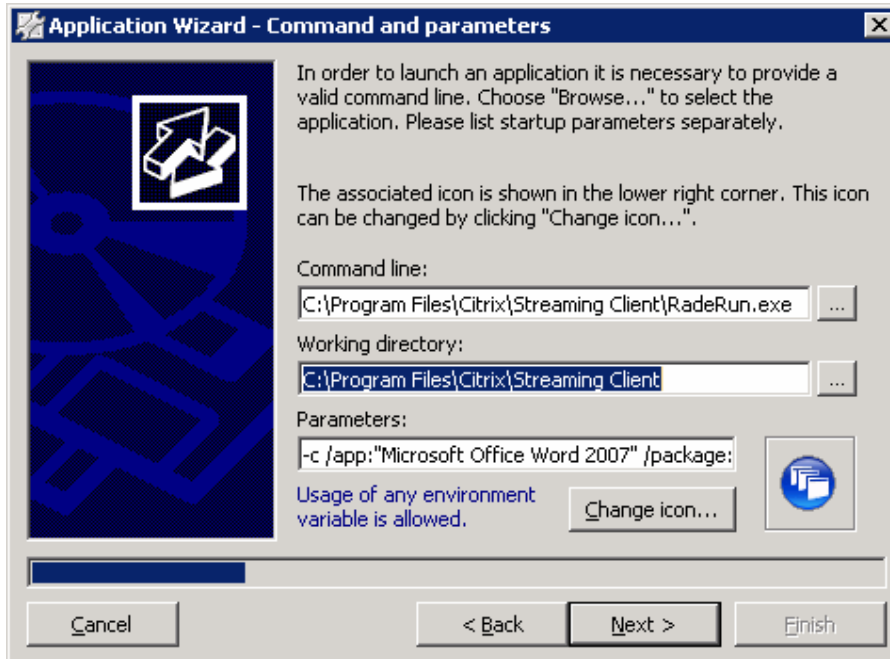


Fig. 2



- Select *Next*



Command Line:

C:\Program Files\Citrix\Streaming Client\RadeRun.exe

Working Directory:

C:\Program Files\Citrix\Streaming Client

Parameters:

-c /app:"Name of Streamed Application" /package:"Location of .profile"

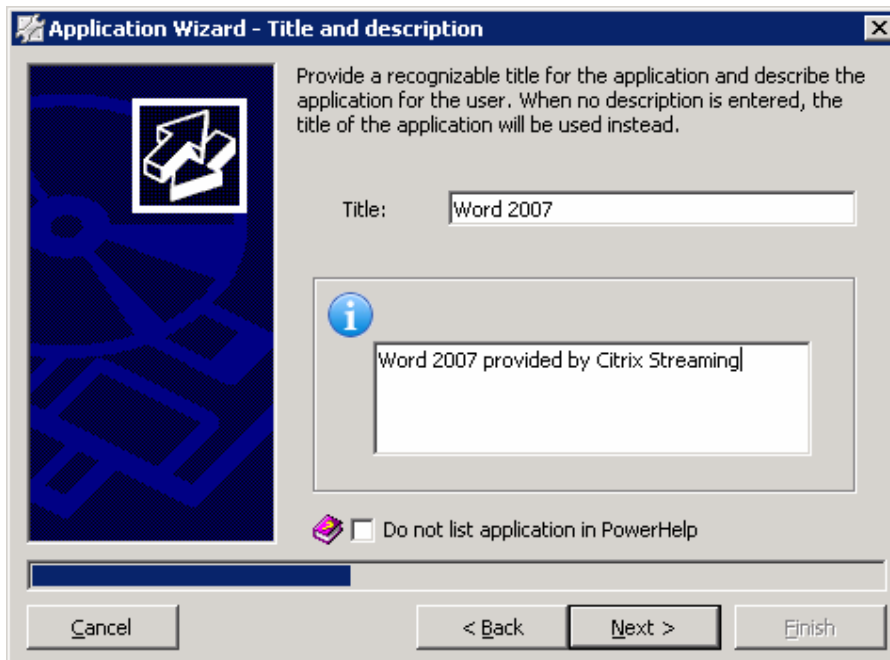
Parameters Example:

-c /app:"Microsoft Office Word 2007"

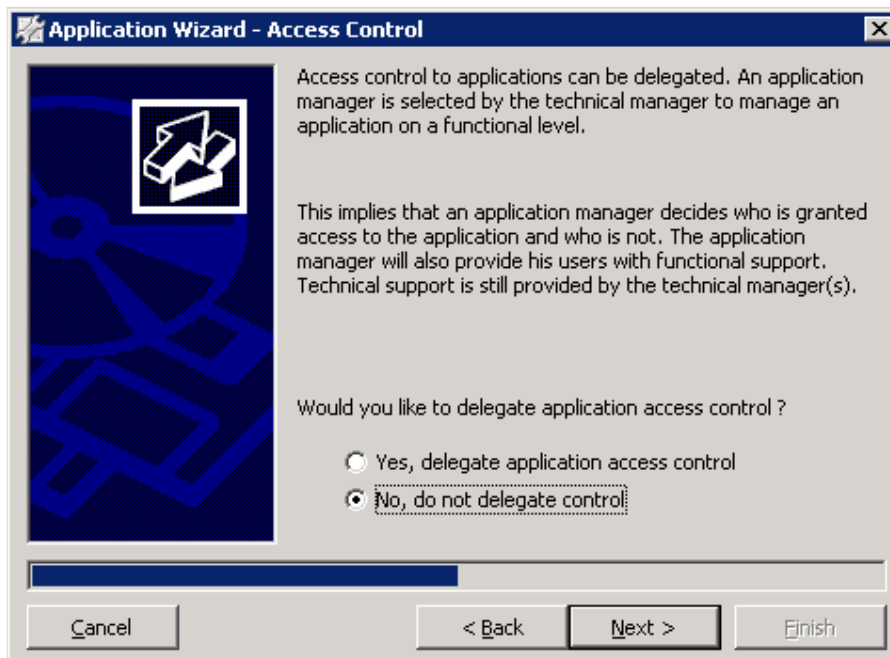
/package:[\\dibble\install\\$\CitrixStreaming\Office2007Ent-PF\Office2007Ent.profile](#)

Tip:

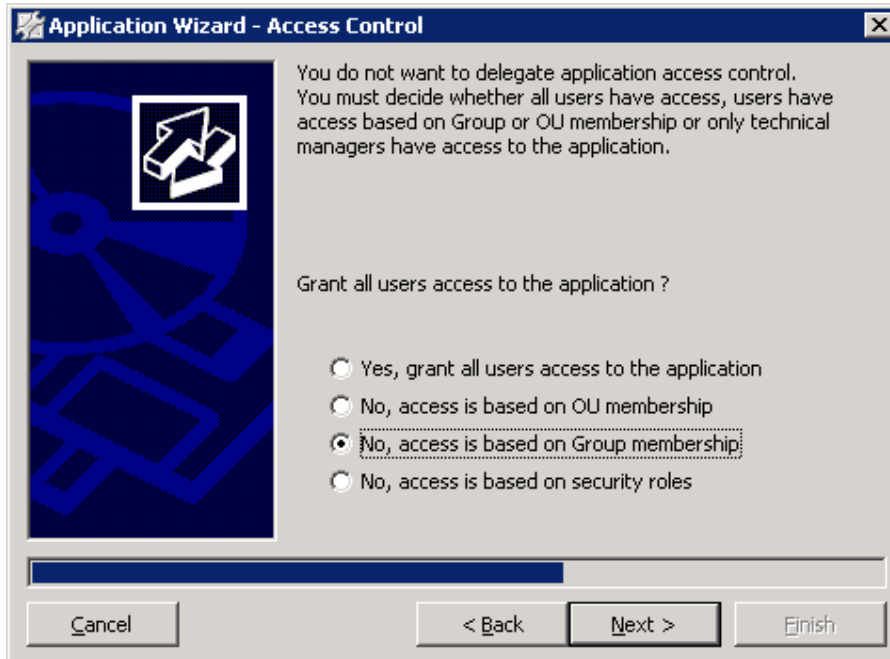
To check that you have the correct information for the /app and /package parameters try publishing the application in the *Citrix Access Suite Console* first.



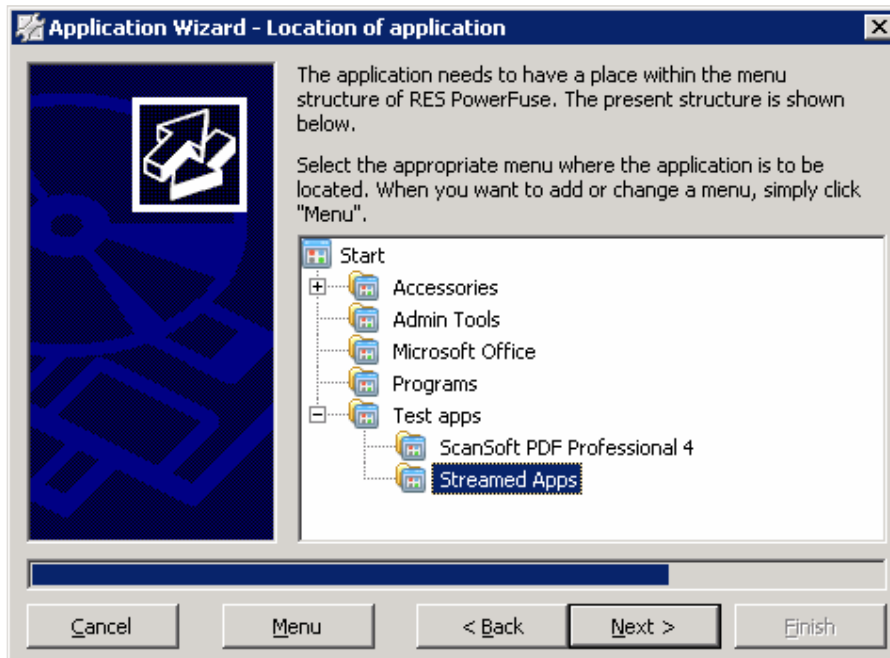
- Enter an appropriate *Title* and *Description*. Remember the Description will be displayed to users!



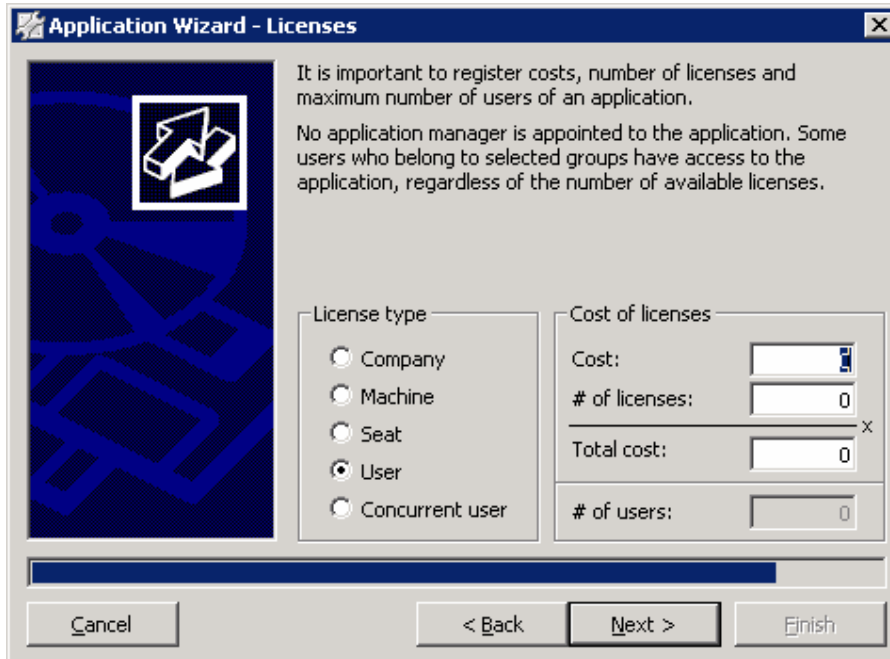
- Choose desired option



- Again, choose desired option.



- Choose desired location in Start Menu.



- Once again, choose desired option.



- End.