

Migrating Existing Citrix Published Applications to RES PowerFuse 2008

RES PowerFuse delivers a personalized, secure and reliable user workspace to any desktop using any application delivery infrastructure, including Citrix Published Applications.

The **RES PowerFuse Migration Toolkit for Citrix XenApp** helps you implement RES PowerFuse in your Citrix environment by using information about existing published applications. The **RES PowerFuse Migration Toolkit for Citrix XenApp** eliminates the need to recreate existing applications manually as published applications in RES PowerFuse.

Use the **RES PowerFuse Migration Toolkit for Citrix XenApp** to:

1. extract information about existing published applications from a Citrix farm.
2. create a Building Block of selected applications.
3. import the Building Block into the RES PowerFuse Management Console.
4. publish the new applications managed by RES PowerFuse to Citrix.

Once the applications are available in the RES PowerFuse Management Console, configured as Citrix published applications, they are managed centrally, making full use of the benefits that RES PowerFuse brings.



Tip

To create an individual Citrix published application in the RES PowerFuse Management Console:

- enable Citrix Integration (at **RES PowerFuse Setup > Integration > Citrix Integration**).
- create the application (at **Application Management**).
- open the application for editing and enable Citrix Application Publishing (under **Configuration > Publishing**).

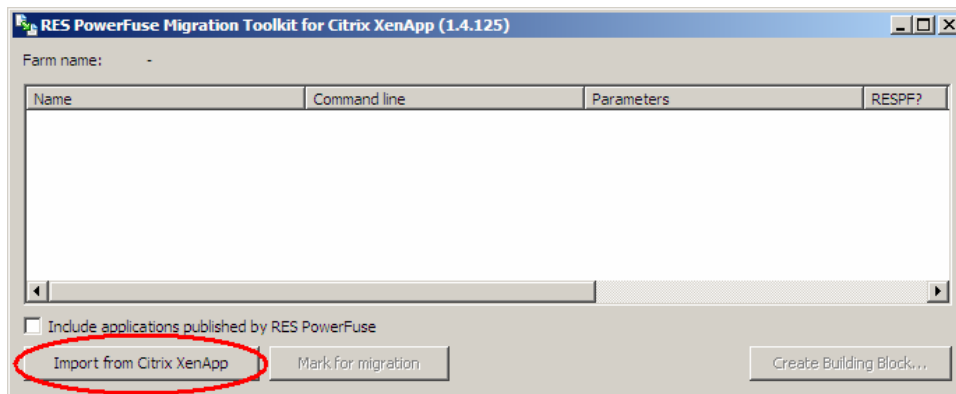
This process is described in detail in the RES PowerFuse Help, which is available from the RES PowerFuse Management Console.


PREREQUISITES

- RES PowerFuse 2008
- Citrix Integration enabled in the RES PowerFuse Management Console (at **RES PowerFuse Setup > Integration > Citrix Integration**)
- Citrix Presentation Server or XenApp, 4.5 or higher
- Citrix administrator credentials

PROCEDURE

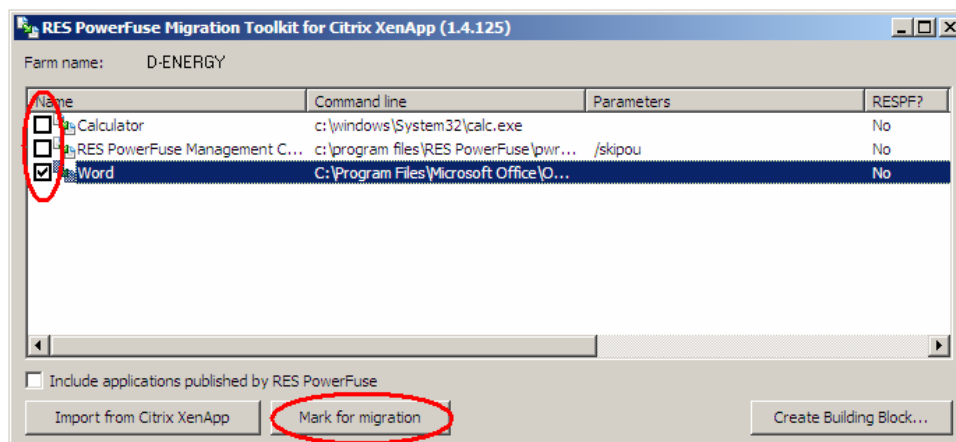
1. Install RES PowerFuse on all the Citrix servers that contain applications to be managed by RES PowerFuse.
2. On one of the Citrix servers (most likely the one on which you perform your Citrix management tasks), log in with Citrix administrator credentials that have access to the farm.
3. Extract the Toolkit from the zip file and run the executable. The RES PowerFuse Migration Toolkit for Citrix XenApp will start.
4. To load the list of published applications from your farm, click **Import from Citrix XenApp**:



 **Tip**

If you already manage some published applications from RES PowerFuse, and others from Citrix, you can view a full list of all published applications: select the option **Include applications published by RES PowerFuse**. The published applications already managed by RES PowerFuse are shown to provide an overview; they cannot be marked for migration.

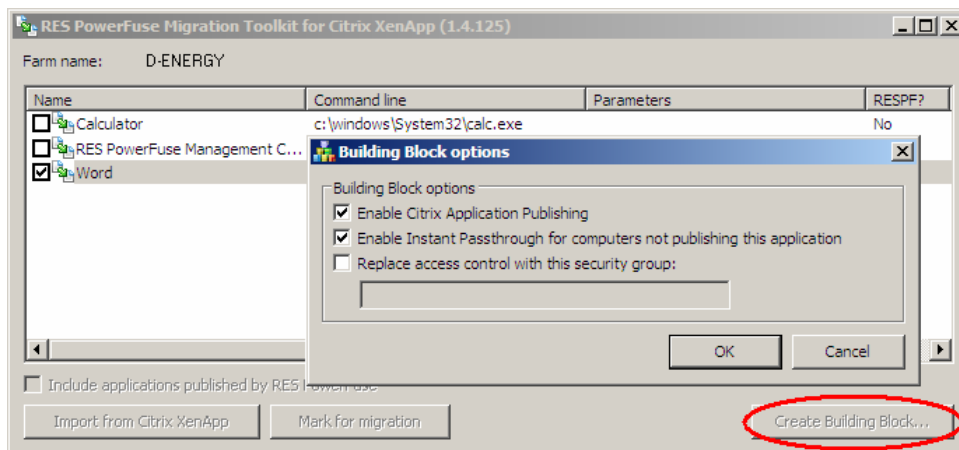
5. Select the applications to be migrated by clicking the check boxes, or by selecting an application and clicking **Mark for migration**:



6. Click **Create Building Block**.
7. In the **Building Block options** popup, you can change the RES PowerFuse

configuration of the imported applications:

- with the option **Enable Citrix Application Publishing**, the imported applications will be configured as published applications in RES PowerFuse. You may want to clear this option if you want to change some of the applications' settings in the RES PowerFuse Management Console before publishing them.
- the option **Enable Instant Passthrough...** enables the RES PowerFuse feature Instant Passthrough for the imported applications. With Instant Passthrough, the RES PowerFuse Workspace Manager starts a published application remotely if it is not present on the server where the user's session is running.
- use the option **Replace access control with security group** to overrule the access control as configured in the Citrix Access Management Console with access restricted to one or more AD Groups. Separate multiple entries with a semi-colon (;).. For example: d-energy\management;d-energy\engineers.



8. Click **OK**, then provide a name and location for the Building Block file.
9. In the RES PowerFuse Management Console, import the Building Block, for example by right-clicking the **Application Management** node and choosing **Building Blocks > Add/Update Applications**. The imported applications appear in the Application Management node. The applications can now be managed in RES PowerFuse.



Tip

The RES PowerFuse Help provides detailed configuration information, for example about applications, Citrix Integration, Instant Passthrough and Security Roles. Access the Help by pressing F1 from any screen in the RES PowerFuse Management Console.

Disclaimer

Whilst every care has been taken by RES Software to ensure that the information contained in this publication is correct and complete, it is possible that this is not the case. RES Software provides the publication "as is", without any warranty for its soundness, suitability for a different purpose or otherwise. RES Software is not liable for any damage which has occurred or may occur as a result of or in any respect related to the use of this publication. RES Software may change or terminate this publication at any time without further notice and shall not be responsible for any consequence(s) arising there from. Subject to this disclaimer, RES Software is not responsible for any contributions by third parties to this publication.

Copyright Notice

Copyright © 1998-2009 RES Software, The Netherlands. RES®, PowerFuse®, Wisdom®, Orchestra®, Insight® and the RES logo are either registered trademarks or trademarks of RES Software in Europe, the United States and other countries. Microsoft and Windows are either registered trademarks of Microsoft Corporation in the United States and/or other countries. All other product and company names mentioned may be trademarks and/or service marks of their respective owners.

Copyright © RES manuals, training materials and software 1998-2009 Real Enterprise Solutions Development BV, The Netherlands. U.S. Pat. No. "US 7,433,962", other patents pending.

Any rights not expressly granted herein are reserved by RES Software or Real Enterprise Solutions Development BV.