



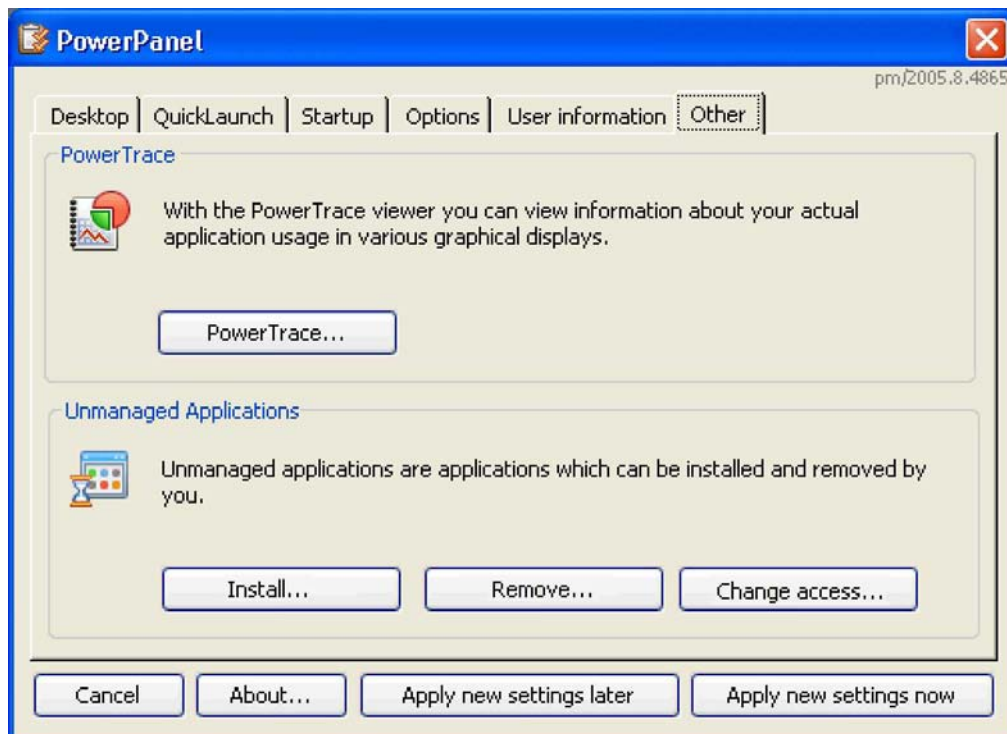
Feature Guide Partly Managed Workstations



1 Introduction

Setting up a secure environment for your users is a relatively easy task to perform with RES PowerFuse. However, there are always exceptions that need special attention. Specialized software may consist of many configurable components or needs to be updated regularly. This does not pose a problem when many users use the same software, but complicates things very much when it is only used by highly-specialized personnel or by users that are out of the office most of the time. In these cases, the only solution seems to be to leave these workstations unmanaged, so that users are able to install or update their packages themselves. However, this poses a very large security risk.

This is where Partly Managed Workstations come into focus. Partly Managed Workstations are workstations or laptops on which you can grant specific users the freedom to install software themselves. Although this means the software will be unmanaged, the workstation or laptop itself remains completely managed by RES PowerFuse.



Unmanaged Applications Section of PowerPanel



2 Partly Managed Workstations

Case 1

Company X employs 20 engineers that use AutoCAD (software for Computer Aided Design), an application that can be extended with hundreds of modules, libraries, templates, utilities, service packs, and updates. Most of these software components come with their own license and are updated on regular basis. Each engineer has different software needs. However, because of the wide choice of AutoCAD components, it is virtually impossible for the system administrator of company X to find out what to install on which desktop.

Case 2

Within the same company a sales manager is employed. His daily tasks include visiting customers, selling products, and making reports. The sales manager depends on a laptop with specific software: in his daily work, he uses a catalog with different sales items, which is updated on regular basis. However, it is very difficult for the system administrator to install these updates, because the sales manager is on the road most of the time.

Partly Managed Workstations in PowerFuse

Partly Managed Workstations are being used to handle situations as described above. It enables you to allow a specific user on a specific device a controlled amount of freedom. With this freedom, a user is able to install software and updates on his RES PowerFuse-managed workstation.

After enabling the "Partly Managed Workstation" feature, which is located in the Desktop management node of the Real Enterprise Manager, you need to configure one or more PowerZones. These PowerZones define which workstations will be "partly managed". First specify on which workstations specific users are allowed to install applications. Then specify which users are allowed to install applications.

Software installed by the end-user will be available in a special menu "Programs (unmanaged)" in the user's Start menu, but will NOT be visible in the Real Enterprise Manager. When new software is installed, the end-user can choose whether the new software will be available only to him or to all users logging on to that workstation.



Install Unmanaged Application Wizard

Security

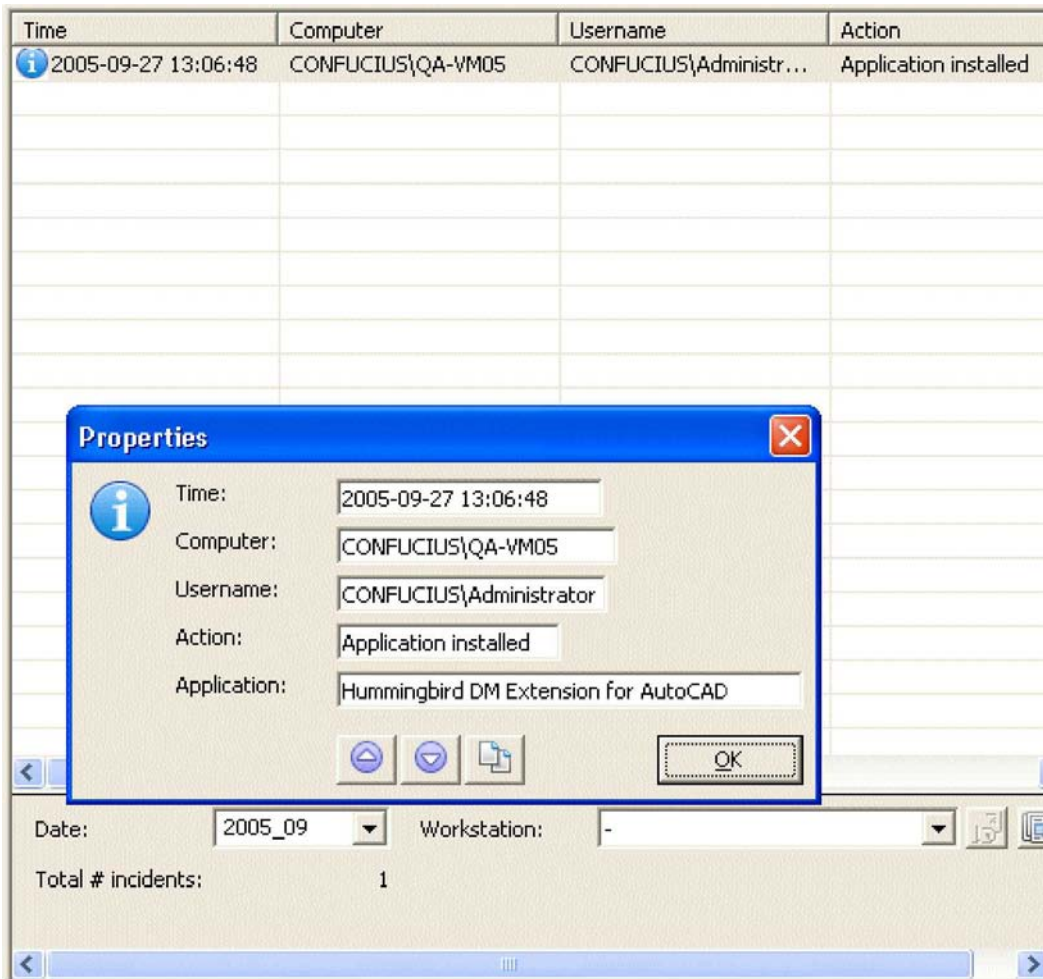
Even though the expert user is granted the freedom of installing software with the wizard in his PowerPanel, the workstation is still managed by RES PowerFuse, with features like Security Management's "Applications", Performance Management's "CPUShield", and Access Control. The user must have appropriate local Windows privileges to be able to install new software. This provides the end-user with a limited, but sufficient amount of freedom on his RES



PowerFuse managed system. He is now able to install the software he needs, like the mentioned AutoCAD components or the catalog updates. Providing the end-user with the freedom to install software on his system poses a certain security risk. However, this risk is a calculated one, because Partly Managed Workstations will only be used by expert users for specific needs.

Unified Management

Partly Managed Workstations log all install and remove actions of a user. Only software installed by the user can be removed. If a user installs other software than the components or updates he is supposed to, this will show in the log. You can then decide to revoke both freedom to install and access to the installed applications with a single mouse click. In this way you always keep control over the workstation, thereby further enabling Unified Management.



Partly Managed Workstations Log in the Real Enterprise Manager

The Right Person For The Job

Partly Managed Workstations enable an expert user to install highly specialized software and updates, like AutoCAD extensions. It is no longer necessary for a system administrator to do this. This means that specialized software will be installed by the person that knows best how to perform this installation, instead of the person that knows best how to manage the system.

Flexibility and Productivity

Because it is no longer necessary for the system administrator to install software for users of Partly Managed Workstations, this is a very useful feature for expert users that are often out of the office. For example, sales personnel no longer need to return to the office every time their systems or sales catalogs need to be updated. They can do this themselves - at the time it suits them. This greatly enhances flexibility and productivity.



3 Conclusion

Partly Managed Workstations are very useful when it is inevitable that installation and maintenance of software is performed by an expert end-user. With Partly Managed Workstations, you can give end-users the freedom to install the software they need, at the time they need it, and still have full control over your workstations and laptops.

With Partly Managed Workstations, full security and control will be maintained at all times, at the same time giving the user flexibility to work more efficiently.



DISCLAIMER

RES created this guide to supply information that assists you with the installation of the RES PowerFuse product and framework. Although the greatest care has been taken to make this document as accurate as possible, Real Enterprise Solutions Nederland B.V. (The Netherlands), RES EMEA B.V. (Europe), and Real Enterprise Synergy Inc. (USA) cannot guarantee the complete accuracy of the information provided in this publication. This publication and the RES PowerFuse program can be changed or terminated at any given time without further notice. Real Enterprise Solutions Nederland B.V. (Netherlands), RES EMEA B.V. (Europe), and Real Enterprise Synergy Inc. (USA) disclaim any loss directly or indirectly due to using RES PowerFuse and its features or the information that is presented in this publication. This information is not warranted for any purpose.

Real Enterprise Solutions Nederland B.V. (Netherlands), RES EMEA B.V. (Europe), and Real Enterprise Synergy Inc. (USA) disclaim any loss which could directly, indirectly, or seemingly be related to the use of RES PowerFuse, the RES Subscriber, upgrade packs, PowerPacks, any other RES-supplied software, or the use of information provided by Real Enterprise Solutions Nederland B.V. (Netherlands), RES EMEA B.V. (Europe), or Real Enterprise Synergy Inc. (USA) through any other documents.

COPYRIGHT

Copyright © 1998-2006 Real Enterprise Solutions Development B.V., All rights reserved, patents pending. RES, PowerFuse, and the PowerFuse Logo are registered trademarks of Real Enterprise Solutions Development B.V. Windows is a registered trademark of the Microsoft Corporation in the United States and all other countries. All other product names, company names, marks, logos, and symbols are trademarks of their respective owners.

⚠ WARNING: *RES PowerFuse is protected by copyright law and international treaties. Unauthorized reproduction, distribution, reverse engineering, or decompiling of the program or any portion of it, may result in severe civil and criminal penalties, and will be prosecuted to the maximum extent possible under the law.*